

H3-TC1. 33-182X-75+

5-1800MHz 75Ω 3:4 Balun

• APPLICATIONS

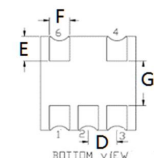
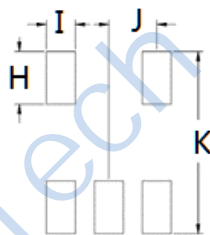
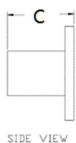
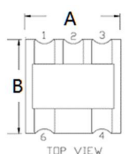
• Ideally suited for high volume CATV/Broadband applications.

• FEATURES

- Surface mount
- Impedance ratio: 3:4
- Available on tape and reel
- RoHS compliant and Pb free
- 260°C reflow compatible

DIMENSIONS

PCB LAYOUT



A	B	C	D	H	I	J
4.21	4.21	2.79	1.27	1.40	0.76	1.27
E	F	G		K		
1.11	0.90	2.00		4.83		

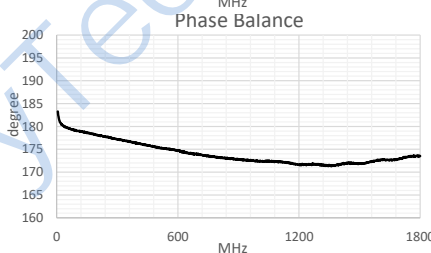
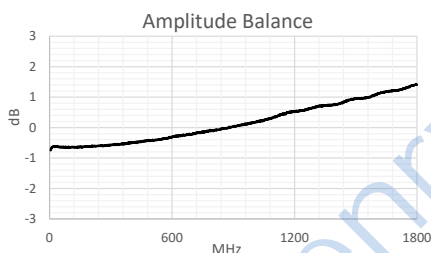
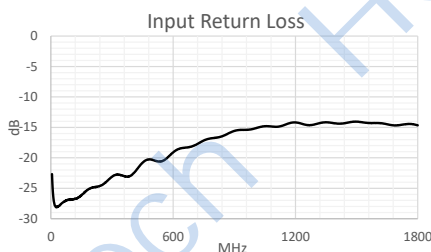
Unless otherwise stated dimensions are in mm

Tolerance: .xx ± 0.25, .xxx ± 0.05

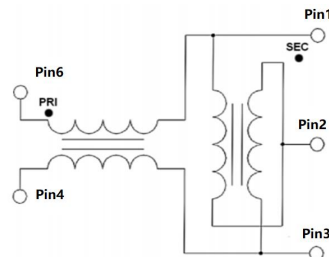
ELECTRICAL SPECIFICATIONS@25°C:

Parameters (P#: ENA PORT)	frequency band	Min.	Typ.	Max.	Unit
Port Impedance, Z0			75		Ohm
Insertion Loss	5-1800MHz		1.6	2.3	dB
Amplitude Balance	5-1200MHz		0.4	1.0	dB
	1200-1800MHz		1.3	2.1	dB
Phase Balance	5-1800MHz		5	10	°
Input Return Loss	5-1800MHz	10	14		dB

TEST CURVE



FUNCTIONAL SCHEMATIC



PIN CONFIGURATION

Pin No.	Function
1	Secondary Dot (output 1)
2	Secondary center tap (ground)
3	Secondary (output 2)
4	Primary (ground)
6	Primary Dot (input)

ABSOLUTE MAXIMUM RATINGS

Parameter	Value
Input Power	250mW MAX
DC Current	30mA MAX
Operating Temperature Range	-40 to 85°C

Tel: +86-28-85589664

E-mail: mr\_li@henglitaitech.com

Web: www.hltchips.com

Adress: No.198 Tianqin East Street, Gaoxin West District, Chengdu City