

Features

- excellent rejection
- flat group delay @ passband
- good VSWR, 1.3:1 typ @ passband
- aqueous washable

Applications

- receivers / transmitters
- wire-line broadband access
- cable system (video & data)

HT-SXBP-240+



50Ω 238 to 242 MHz

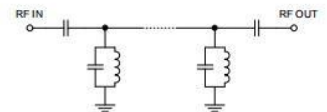
CENTER FREQ. (MHz)	PASSBAND (MHz) (Loss < 3dB) F1 - F2	STOPBAND (MHz)				VSWR	
		(Loss > 20dB) F3 F4		(Loss > 40dB) F5 F6		Passband Typ.	Stopband Typ.
240	238-242	220	260	210	275-2500	1.3	18

Operating Temperature	-40°C to 85°C
Storage Temperature	-55°C to 100°C
RF Power Input*	0.5W max.

Permanent damage may occur if any of these limits are exceeded.

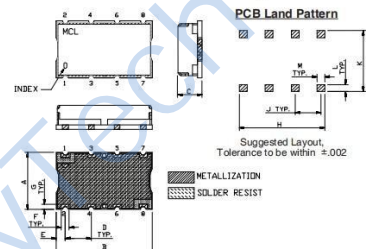
Frequency (MHz)	Insertion Loss (dB)		Return Loss (dB)	Frequency (MHz)	Group Delay (nsec)
	α	σ			
1.0	87.75	3.29	0.69	235.0	50.77
10.0	78.24	1.27	0.71	235.5	49.92
100.0	86.90	2.12	0.12	236.0	49.17
210.0	48.10	0.27	0.26	236.5	48.50
220.0	31.25	0.50	0.74	237.0	47.96
226.0	16.64	0.88	2.63	237.5	47.43
229.0	8.88	0.72	8.14	238.0	47.18
238.0	4.07	0.04	16.27	238.4	46.95
240.0	4.06	0.02	15.18	239.0	46.67
242.0	4.19	0.04	14.86	239.4	46.61
250.0	8.24	0.57	8.62	240.0	46.58
253.0	14.85	0.71	2.99	240.6	46.71
260.0	29.15	0.51	0.89	241.0	46.75
275.0	47.42	0.36	0.33	242.0	46.69
300.0	64.20	0.50	0.16	243.0	46.82
500.0	92.94	5.40	0.07	244.0	47.29
1500.0	73.28	0.76	0.29	244.5	47.83
2500.0	49.59	1.01	0.37	245.0	48.90

Functional Schematic

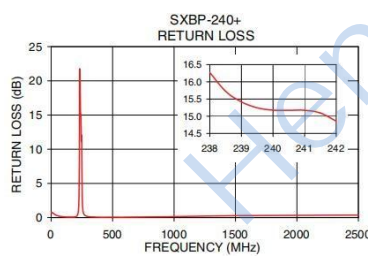
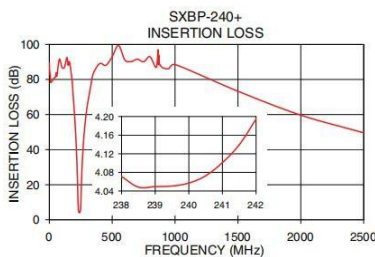


INPUT	1
OUTPUT	8
GROUND	2,3,4,5,6,7

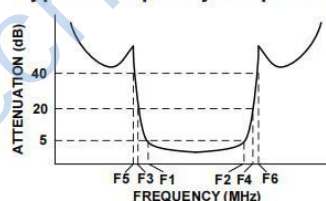
Outline Drawing



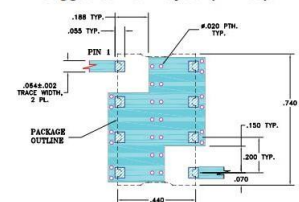
A	11.18	D	5.08	G	1.02
B	18.80	E	1.78	H	16.76
C	6.86	F	1.52	J	5.08
L	1.40	M	1.52	K	11.94
wt	3.0				



Typical Frequency Response



Demo Board MCL P/N: TB-368
Suggested PCB Layout (PL-230)



- NOTE:
1. TRACE WIDTH IS SHOWN FOR FR4 WITH DIELECTRIC THICKNESS: .005" (128µ) COPPER: 1/2 OZ. EACH SIDE. FOR OTHER MATERIALS TRACE WIDTH MAY NEED TO BE MODIFIED.
 2. BOTTOM SIDE OF THE PCB IS CONTINUOUS GROUND PLANE.
- DENOTES PCB COPPER LAYOUT WITH SMDSC (SOLDER MASK OVER BARE COPPER)
 - DENOTES COPPER LAND PATTERN FREE OF SOLDER MASK