

# Low Pass Filter

## Features

- High rejection
- Good VSWR, 1.4:1 typical in passband
- Aqueous washable

## Applications

- TV Broad casting
- Wireless communications
- VHF/UHF receivers / transmitters
- Military

## HT-RLP-1094+



50Ω DC to 1094 MHz

Electrical Specifications at 25°C						
Parameter		Frequency(MHz)	Min.	Typ.	Max.	Unit
Pass Band	Insertion Loss	DC-1094	-	0.7	1.0	dB
	Freq.Cut-Off	1380	-	3.0	-	dB
	VSWR	DC-1094	-	1.4	1.9	:1
Stop Band	Rejection Loss	1700-3650	20	28	-	dB
		1700-3650	-	37	-	:1

## Maximum Ratings

Operating Temperature	-40°C to 85°C
Storage Temperature	-55°C to 100°C
RF Power Input*	3.5W max.

Permanent damage may occur if any of these limits are exceeded.

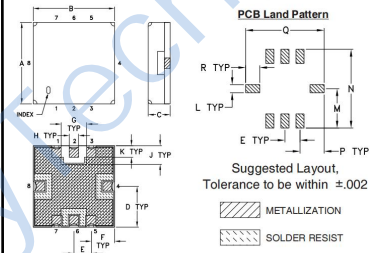
## Pin Connections

RF IN	2
RF OUT	6
GROUND	1, 3, 4, 5, 7, 8

## Functional Schematic



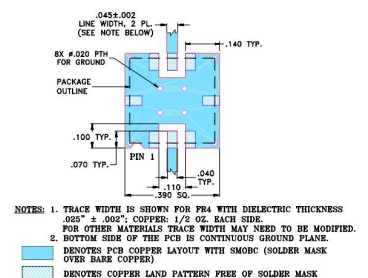
## Outline Drawing



## Outline Dimensions (inch/mm)

A	B	C	D	E	F	G	H	J
.350	.100	.175	.075	.100	.110	.040	.080	.080
8.89	2.54	4.45	1.91	2.54	2.79	1.02	2.03	
K	L	M	N	P	Q	R		wt.
.050	.040	.195	.390	.120	.390	.070		grams
1.27	1.02	4.95	9.91	3.05	9.91	1.78		0.25

## Suggested PCB Layout



Typical Performance Data				
Frequency (MHz)	Insertion Loss (dB)	VSWR (:1)	Frequency (MHz)	Group Delay (nsec)
10	0.02	1.00	1	0.87
20	0.04	1.04	2	0.81
80	0.09	1.03	10	0.79
300	0.18	1.04	20	0.77
640	0.37	1.24	70	0.76
1000	0.61	1.34	100	0.76
1050	0.66	1.35	150	0.76
1094	0.72	1.39	200	0.77
1130	0.79	1.43	300	0.78
1250	0.95	1.34	400	0.79
1350	1.85	1.84	450	0.80
1380	3.18	3.05	500	0.82
1430	6.98	7.47	600	0.84
1500	13.50	18.50	650	0.86
1650	25.90	39.49	700	0.88
1700	29.36	43.44	800	0.93
1900	39.84	54.29	900	1.00
2300	47.40	59.91	1000	1.10
3400	53.85	72.39	1050	1.16
3650	35.73	52.65	1094	1.22

