

Features

- High rejection, 30 dB typical
- Sharp insertion loss roll-off
- Shielded case
- Aqueous washable

Applications

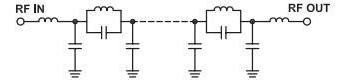
- Defence communications
- Transmitters / receivers
- Harmonic rejection

HT-LPF-B35+

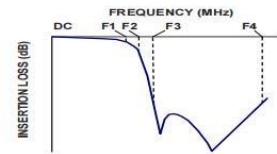


50Ω DC to 35 MHz

Functional Schematic



Typical Frequency Response



Parameter		F#	Frequency(MHz)	Min.	Typ.	Max.	Unit
Pass Band	Insertion Loss	DC-F1	DC-35	-	0.85	2	dB
	Freq. Cut-Off	F2	40	-	3	-	dB
	VSWR	DC-F1	DC-35	-	1.5	2	1
Stop Band	Rejection Loss	F3-F4	45-2500	20	30	-	dB
	VSWR	F3-F4	45-2500	-	15	-	1

Typical Performance Data at 25°C

Frequency (MHz)	Insertion Loss (dB)	VSWR (:1)	Frequency (MHz)	Group Delay (nsec)
0.5	0.13	1.04	1.00	22.33
5.0	0.21	1.20	5.00	22.33
10.0	0.25	1.23	10.00	22.85
20.0	0.36	1.21	15.00	24.45
30.0	0.50	1.12	18.00	25.65
35.0	0.78	1.34	20.00	26.58
40.0	1.82	1.67	22.00	27.74
42.0	10.39	9.33	23.00	28.50
44.0	24.43	19.54	24.00	29.39
45.0	31.15	22.29	25.00	30.44
46.0	37.80	24.48	26.00	31.70
48.0	51.90	28.03	27.00	33.05
50.0	70.55	31.60	28.00	34.52
70.0	81.69	62.05	29.00	36.19
100.0	73.91	108.58	30.00	37.85
500.0	75.80	217.15	31.00	39.69
1000.0	79.89	91.43	32.00	41.73
1500.0	69.55	64.35	33.00	44.33
2000.0	73.28	51.10	34.00	47.77
2500.0	48.48	46.96	35.00	52.47

Maximum Ratings

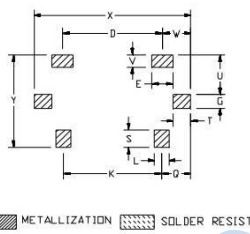
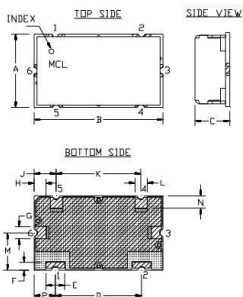
Operating Temperature	-40°C to 85°C
Storage Temperature	-55°C to 100°C
RF Power Input*	1 W max.
Permanent damage may occur if any of these limits are exceeded.	

Pin Connections

INPUT	1
OUTPUT	2
GROUND	3,4,5,6

Outline Drawing

PCB Land Pattern

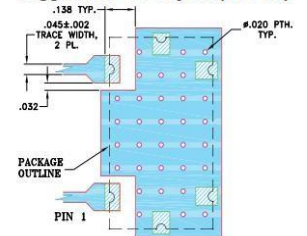


Suggested Layout,
Tolerance to be within ±0.02

Outline Dimensions: Unit (mm)

A	11.99	B	20.98	C	5.59
D	14.00	E	3.00	F	1.19
G	1.98	H	1.93	J	3.61
K	13.79	L	1.98	M	5.99
N	2.01	P	3.51	Q	4.11
S	2.49	T	2.44	U	5.51
V	1.70	W	3.99	X	22.00
WT	6.0		Y	13.00	

Demo Board MCL P/N: TB-400+ Suggested PCB Layout (PL-247)



- NOTES:
1. TRACE WIDTH IS SHOWN FOR FR4 WITH DIELECTRIC THICKNESS .005±.002" COPPER: 1/2 OZ. EACH SIDE.
 2. BOTTOM SIDE OF THE PCB IS CONTINUOUS GROUND PLANE.
- DENOTES PCB COPPER LAYOUT WITH SMOBC (SOLDER MASK OVER BARE COPPER)
 DENOTES COPPER LAND PATTERN FREE OF SOLDERMASK

Low Pass Filter

