

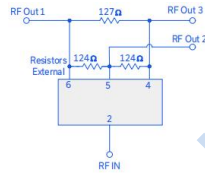
Features

- isolation resistor, external
- low insertion loss, 0.8 dB typ.
- excellent amplitude unbalance, 0.2 dB typ.
- very good phase unbalance, 5 deg. typ.

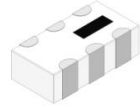
Applications

- DSS
- PSC, DECT
- WLAN
- Satellite communication

electrical schematic



HT-SCN-3-28+



3 Way-0° 50Ω 1600 to 2800 MHz

Electrical Specifications at 25°C

Parameter	Frequency(MHz)	Min.	Typ.	Max.	Unit
Frequency Range		1600		2800	MHz
Insertion Loss, above 3.0 dB	1600-2800		0.8	1.2	dB
	1800-2000		0.8	1.2	
	2000-2200		0.8	1.2	
	2400-2500		0.8	1.2	
Isolation	1600-2800	10	12		dB
	1800-2000	12	14		
	2000-2200	13	16		
	2400-2500	17	20		
Phase Unbalance	1600-2800		5.0	8.0	Degree
	1800-2000		5.0	8.0	
	2000-2200		5.0	8.0	
	2400-2500		5.0	8.0	
Amplitude Unbalance	1600-2800		0.2	0.6	dB
	1800-2000		0.2	0.6	
	2000-2200		0.2	0.5	
	2400-2500		0.2	0.5	
Return Loss (Input)	1600-2800		10		dB
	1800-2000		10		
	2000-2200		11		
	2400-2500		11		
Return Loss (Output)	1600-2800		12		dB
	1800-2000		13		
	2000-2200		12		
	2400-2500		12		

Maximum Ratings

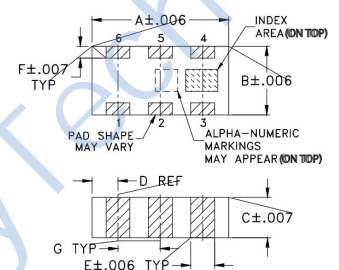
Operating Temperature	-55°C to 100°C
Storage Temperature	-55°C to 100°C
RF Power Input*	15W max. at 25°C

*Derate linearly to 6W at 100°C ambient. Permanent damage may occur if any of these limits are exceeded.

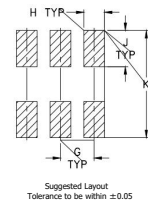
Pin Connections

SUM PORT	2
PORT 1	6
PORT 2	5
PORT 3	4
GROUND	1,3
PORT 1-2 ,2-3	resistor external 124 OHMS
PORT 1-3	resistor external 127 OHMS

Outline Drawing

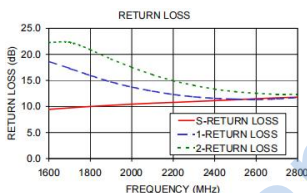
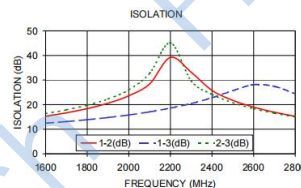
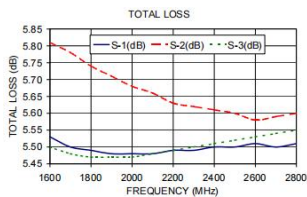


PCB Land Pattern

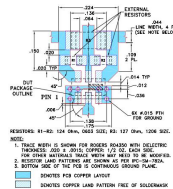


TYPICAL PERFORMANCE DATA

Frequency (MHz)	Insertion Loss (dB)		Amplitude Unbalance (dB)	Isolation (dB)	Phase Unbalance (deg.)	Return Loss (dB)	
	S-1	S-2				1	2
1600.00	5.53	5.81	0.31	12.43	3.29	9.44	18.66
1700.00	5.50	5.78	0.29	13.09	3.64	9.73	17.30
1800.00	5.49	5.74	0.27	13.86	3.99	9.99	15.95
1900.00	5.48	5.71	0.24	14.75	4.31	10.23	14.71
2000.00	5.48	5.68	0.21	15.80	4.62	10.44	13.73
2100.00	5.48	5.66	0.18	17.05	4.79	10.63	12.94
2200.00	5.49	5.63	0.15	18.57	4.99	10.78	12.30
2300.00	5.49	5.62	0.12	20.43	5.06	10.95	11.85
2400.00	5.50	5.61	0.11	22.80	5.14	11.12	11.56
2500.00	5.50	5.60	0.09	25.66	5.14	11.30	11.41
2600.00	5.51	5.58	0.08	28.11	5.02	11.49	11.33
2700.00	5.50	5.59	0.08	27.40	4.88	11.65	11.46
2800.00	5.51	5.60	0.09	24.44	4.68	11.79	11.72



Suggested PCB Layout



Outline Dimensions: Unit (mm)

A	3.20	B	1.60	C	0.89
D	0.61	E	0.56	F	0.28
G	0.99	H	0.61	J	1.07
K	3.12	WT			0.02g