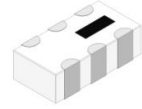


Power Splitter/Combiner

HT-SCN-2-35+



2 Way-0° 50Ω 2700 to 3500 MHz

Features

- isolation resistor, external 100 ohms
- low insertion loss
- excellent amplitude unbalance
- temperature stable
- high isolation
- excellent power handling, 4W as splitter
- temperature stable LTCC

Applications

- Amateur radio
- Defense
- Wireless communication

Electrical Specifications at 25°C

Parameter	Frequency(MHz)	Min.	Typ.	Max.	Unit
Frequency Range		2700		3500	MHz
Insertion Loss, above 3.0 dB	2700-3500		0.6	1.1	dB
Isolation	2700-3500	17	20		dB
Phase Unbalance	2700-3500		1.0	3.0	Degree
Amplitude Unbalance	2700-3500		0.1	0.3	dB
Return Loss (Input)	2700-3500		15		dB
Return Loss (Output)	2700-3500		18		dB

Maximum Ratings

Operating Temperature	-55°C to 100°C
Storage Temperature	-55°C to 100°C
RF Power Input*	4W max. at 25°C

*Derate linearly to 1.3W at 100°C ambient. Power input as combiner is limited by rating of external 100Ω Resistor. Permanent damage may occur if any of these limits are exceeded.

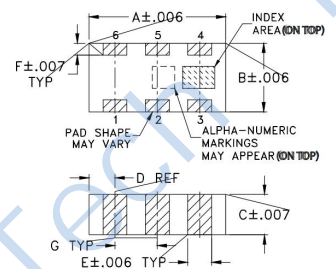
Pin Connections

SUM PORT	2
PORT 1	6
PORT 2	4
GROUND	1,3,5
PORT 1-2	resistor external 100 OHMS

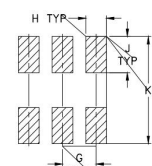
TYPICAL PERFORMANCE DATA

Frequency (MHz)	Insertion Loss (dB)		Amplitude Unbalance (dB)	Isolation (dB)	Phase Unbalance (deg.)	Return Loss (dB)		
	S-1	S-2				S	1	2
2700	3.40	3.36	0.04	20.34	0.94	18.53	27.03	29.58
2800	3.38	3.34	0.04	23.04	1.01	21.34	30.06	33.99
2900	3.54	3.48	0.05	26.82	1.05	25.93	35.43	45.62
2930	3.38	3.33	0.05	28.35	1.06	28.08	37.83	53.72
2975	3.37	3.33	0.04	31.34	1.09	32.34	39.92	40.85
3000	3.37	3.33	0.05	33.69	1.09	37.52	38.77	37.43
3032	3.38	3.33	0.05	37.68	1.13	52.18	36.11	34.33
3083	3.39	3.34	0.05	54.15	1.15	34.17	32.28	30.59
3100	3.39	3.34	0.05	48.72	1.19	31.53	31.09	29.63
3200	3.42	3.37	0.05	31.53	1.23	23.43	25.97	25.26
3300	3.47	3.42	0.05	26.42	1.25	19.36	22.58	22.39
3400	3.54	3.47	0.07	23.37	1.29	16.55	20.04	20.05
3500	3.62	3.54	0.07	21.27	1.36	14.46	19.06	18.24

Outline Drawing



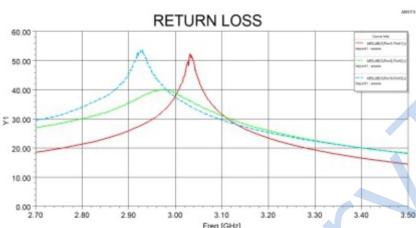
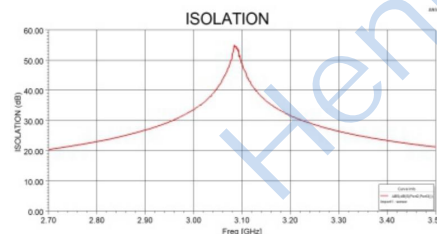
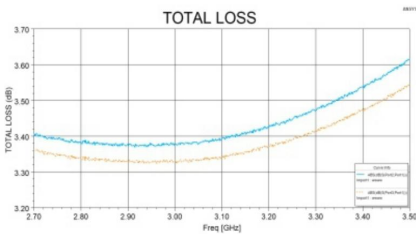
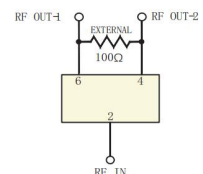
PCB Land Pattern



Outline Dimensions: Unit (mm)

A	3.20	B	1.60	C	0.89
D	0.61	E	0.56	F	0.28
G	0.99	H	0.61	J	1.07
K	3.12	wt			0.02g

electrical schematic



Suggested PCB Layout

