

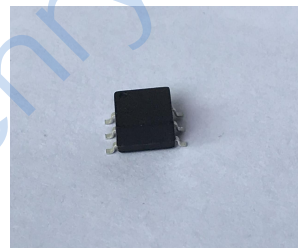
HT-ADTL1-15-75+

Features

- wideband, 10 to 1500 MHz
- balanced transmission line
- excellent amplitude & phase unbalance
- aqueous washable

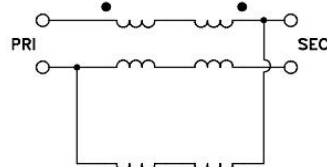
Applications

- impedance matching
- balanced amplifier
- cellular
- GPS



75Ω 10 to 1500 MHz

Config. K



Transformer Electrical Specifications

Ω RATIO	FREQUENCY (MHz)	INSERTION LOSS*	PHASE UNBALANCE (Deg.) Typ.	AMPLITUDE UNBALANCE (dB) Typ.
1	10-1500	1.2dB	2.5	0.5

* Insertion Loss is referenced to mid-band loss, 0.3 dB typ.

Typical Performance Data

FREQUENCY (MHz)	INSERTION LOSS (dB)	INPUT R. LOSS (dB)	AMPLITUDE UNBALANCE (dB)	PHASE UNBALANCE (Deg.)
10.00	0.67	18.66	0.10	0.28
100.00	0.53	26.67	0.09	0.36
200.00	0.54	29.71	0.07	0.89
350.00	0.56	32.98	0.04	1.55
500.00	0.59	30.88	0.00	1.99
700.00	0.63	24.64	0.09	2.37
900.00	0.70	19.73	0.20	2.28
1100.00	0.82	16.05	0.34	1.72
1300.00	0.99	13.27	0.45	0.90
1500.00	1.22	11.11	0.58	0.33

Maximum Ratings

Operating Temperature -20°C to 85°C

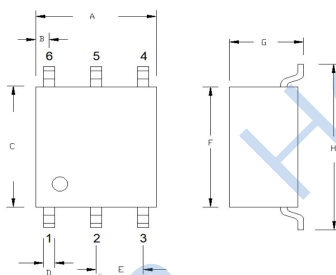
Storage Temperature -55°C to 100°C

RF Power 0.5W

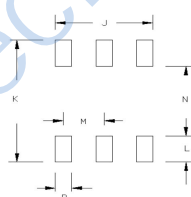
DC Current 30mA

Permanent damage may occur if any of these limits are exceeded.

Outline Drawing



PCB Land Pattern



Pin Connections

PRIMARY	1
SECONDARY CT	2
PRIMARY DOT	3
SECONDARY	4
SECONDARY DOT	5

Outline Dimensions (mm)

A	6.54	N	7.3
B	0.50	M	2.54
C	7.05	P	0.80
D	0.62		
E	2.54		
F	7.05		
G	4.05		
H	9.85		
J	5.88		
K	10.3		
L	1.50		
WT	0.19		