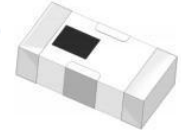


## HT-BFCN-4100+



### Features

- excellent power handling
- small size
- temperature stable
- LTCC construction, and has good moisture resistance, corrosion resistance, high reliability.

### Applications

- Harmonic rejection
- Transmitters / Receivers

### Electrical Specifications at 25°C

Parameter		Frequency(MHz)	Min.	Typ.	Max.	Unit
Pass Band	Center Frequency	3700-4500	-	4100	-	MHz
	Insertion Loss	3700-4500	-	1.7	2.0	B
	VSWR	3700-4500	-	1.5	2.0	:1
Stop Band, Lower	Insertion Loss	DC-2200	20	25	-	dB
	VSWR	DC-2200	-	20	-	:1
Stop Band, Upper	Insertion Loss	6000-9000	15	22	-	dB
	VSWR	6000-9000	-	20	-	:1

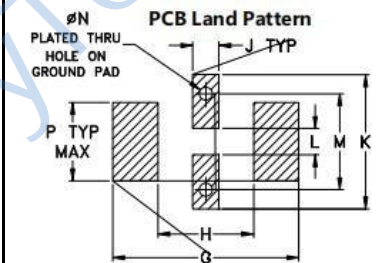
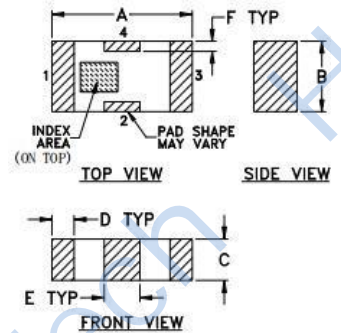
### 50Ω 3700 to 4500 MHz

#### Maximum Ratings

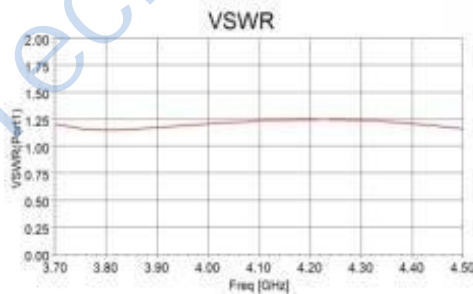
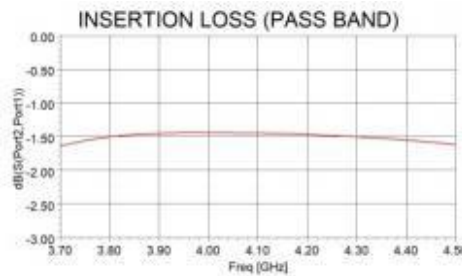
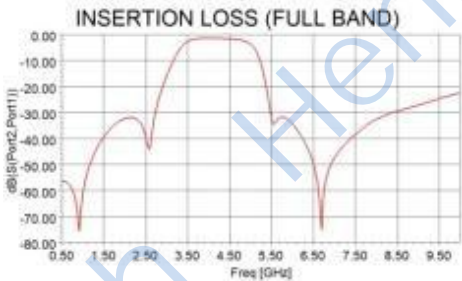
Operating Temperature	-55°C to 100°C
Storage Temperature	-55°C to 100°C
RF Power Input*	1.5W @ 25°C

\*Passband rating, derate linearly to 0.25W at 100°C ambient  
Permanent damage may occur if any of these limits are exceeded.

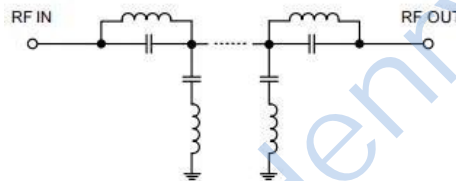
### Outline Drawing



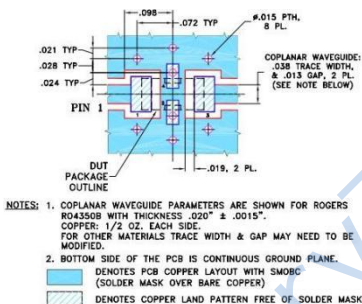
Suggested Layout  
Tolerance to be within ±0.02



### Functional Schematic



### Suggested PCB Layout



### Pin Connections

RF IN	1
RF OUT	3
GROUND	2,4

### Outline Dimensions: Unit ( mm )

A	3.20	B	1.60	C	0.95
D	0.51	E	0.81	F	0.23
G	4.29	H	2.21	J	0.61
K	3.10	L	0.61	M	2.21
N	0.30	P	1.8	wt	0.02g