

# Low Pass Filter

## HT-LFCG-3400+



### Features

- Excellent power handling
- small size
- Low loss
- temperature stable
- LTCC construction , and has good moisture resistance, corrosion resistance, high reliability.

### Applications

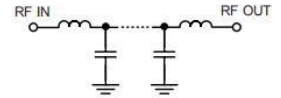
- Harmonic Rejection
- VHF/UHF transmitters / receivers
- Base Station/Micro base station of Mobile Communication , Internet of things terminal、 lab use.

### Electrical Specifications at 25°C

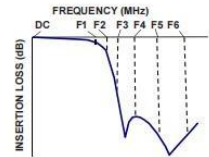
Parameter		Frequency(MHz)	Min.	Typ.	Max.	Unit
Pass Band	Insertion Loss	DC-3400	-	1.3	2.1	dB
	Freq.Cut-Off	3750	-	3.0	-	dB
	Return Loss	DC-3400	-	12	-	dB
Stop Band	Rejection Loss	4700-5000	20	35	-	dB
		5000-8500	32	40	-	dB
		8500-15000	-	25	-	dB

50Ω DC to 3400 MHz

### Functional Schematic



### Typical Frequency Response



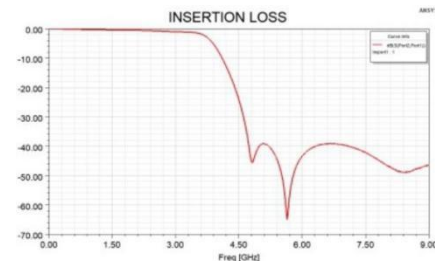
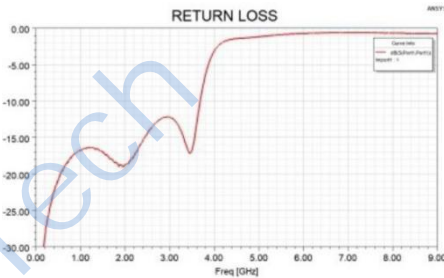
### Pad Connections

INPUT	8
OUTPUT	4
GROUND	1,2,3,5,6,7

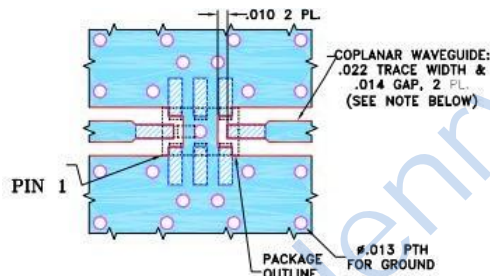
### Maximum Ratings

Operating Temperature	-55°C to 125°C
Storage Temperature	-55°C to 125°C
RF Power Input*	4.5 W max.@25°C

\*Passband rating, derate linearly to 1W at 125°C ambient  
Permanent damage may occur if any of these limits are exceeded.

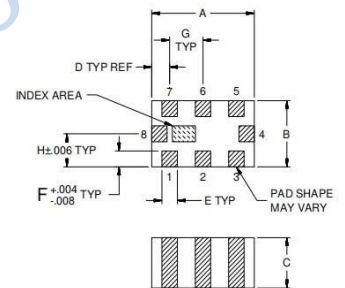


### Demo Board P/N: CG-2012 Suggested PCB Layout



#### NOTES:

1. COPLANAR WAVEGUIDE IS SHOWN FOR ROGERS R04350B WITH DIELECTRIC THICKNESS .010" ± .001". COPPER: 1/2 OZ. EACH SIDE. FOR OTHER MATERIALS TRACE WIDTH AND GAP MAY NEED TO BE MODIFIED.
  2. BOTTOM SIDE OF THE PCB IS CONTINUOUS GROUND PLANE.
- DENOTES PCB COPPER LAYOUT WITH SMOBC (SOLDER MASK OVER BARE COPPER).
- DENOTES COPPER LAND PATTERN FREE OF SOLDER MASK.



### Outline Dimensions: Unit ( mm )

A	2.00	E	0.30
B	1.25	F	0.30
C	0.95	G	0.65
D	0.35	wt	0.008g